

Features

## EF-02D / D HT

Choose from two types of different heads

1. Smaller lofts 202g 2. Larger lofts 199g (The weights indicated are in standard spec)



EF-02D  
Loft 10-11 / Head wt.(std.)202g

Solid strike with  
a heavier head



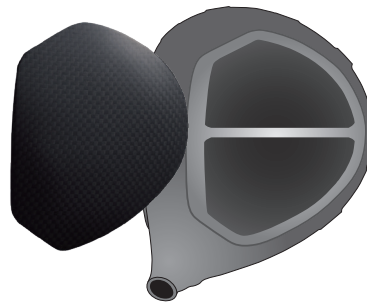
EF-02D HT  
Loft 11.5-12.5 / Head wt.(std.)199g

Upgraded launch with  
an improved forgiveness

Titanium ribs under the carbon part of the crown differently designed for each head

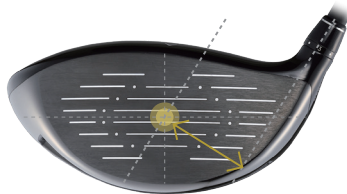


EF-02D: 3 Titanium ribs  
Crown moves back instantly at impact  
=for fast swing speed



EF-02D HT: 1 Titanium rib  
Crown moves back moderately at impact  
=for moderate swing speed

Structure that realizes an improved consistency and confidence



Center CG

Less open face at impact even when hitting the toe  
= More Shot Stability

+  
More ball speed when hitting  
the center of the face



Large Crown  
Surface Area  
+  
Alignment mark

Easy to align at address with  
more confidence

# POWER BOOST CHANNEL

## POWER BOOST CHANNEL structure

The high rigidity part behind the low rigidity part in the sole produces a more spring effect in the lower part of the face

↓  
Longer distance



## [ OPTION ]

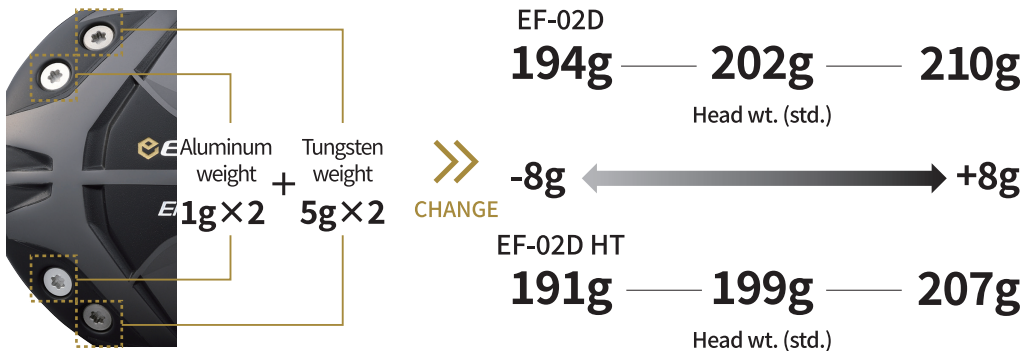
### Head Weight Adjustment

These weights can be replaced with lighter or heavier weights to achieve the head weight that you prefer. +/- 8g range.

#### OPTION WEIGHT SCREW

Aluminum weight : 1g    Stainless weight : 3g    Tungsten weight : 5g

### Standard Setting



\* The weight change requires EPON torque wrench for 8 ANGLE DIALS .

\* Please contact our authorized dealers for the change.

\*\* Any defects including rust after changing weights are not covered by our warranty.

### [ 8 ANGLE DIALS Position Setting ]

Sleeve Position	1	2	3	4	5	6	7	8
F.A	$\pm 0^\circ$	$\circ 0.5^\circ$	$\circ 1.0^\circ$	$\circ 0.5^\circ$	$\pm 0^\circ$	$\circ 0.5^\circ$	$\circ 1.0^\circ$	$\circ 0.5^\circ$
Lie	$\pm 0^\circ$	$+0.5^\circ$	$+1.0^\circ$	$+0.15^\circ$	$+2.0^\circ$	$+1.5^\circ$	$+1.0^\circ$	$+0.5^\circ$

$\circ$  = OPEN  $\circ$  = CLOSED

\* Do not reuse the sleeve.

\* Please contact our authorized dealers for adjusting F.A and Lie angle.



### [ Accessory ]

#### EPON torque wrench for 8 ANGLE DIALS

- \* When using the club, please make sure to tighten the screw with EPON Torque Wrench.
- \* Do not use other tools except the EPON Torque to tighten the screw.